



shopfitting and retail interiors



www.oracleinteriors.co.uk

Centre One
Lysander Way
Old Sarum
Salisbury SP4 6BU

T 01722 327 204
F 01722 329382
M 07836 787796
mail@oracleinteriors.co.uk

About Us

Retail and Leisure Shopfitting



Oracle Interiors are specialist retail fit-out contractors undertaking complex interior fit-out projects within Central London and all major shopping centres across the country. This includes high street fashion and accessory retailers, restaurants and coffee shops, and other speciality markets such as health and beauty.

We work throughout the UK and also into Europe, where we regularly handle interior fit-out with associated specialist joinery production, shopfronts, mechanical and electrical works and any structural building works, such as installation of lift shaft and escalators. We provide a comprehensive construction and fit-out solution, and have a very experienced project management team focussed on delivering client objectives, within strict commercial parameters.

Although many of the clients we work with often have an independent team who deal with Interior Design, Local Authority / Developer Approvals and Cost Management we are able to bring lots of experience to the successful implementation of your project. We have the relevant experience to put together a team that will deliver according to strict budgetary requirements - ask us if you need a design and build solution.

Typical projects vary from small refits through to 30,000 sq ft new store build projects complete with elevators escalators, electrical, mechanical and life safety systems packages with all fixtures and fittings.

About Us

Retail and Leisure Shopfitting



During the last twelve years we have undertaken a diverse and interesting range of construction and fit out projects. We can bring considerable experience in the following specialist areas of fit-out;

- high end fashion boutiques with bespoke fixtures and fittings for international brands.
- turnkey stores where the footprint is often 30,000sq ft+ for fast fashion retailers.
- shoe shops and leather goods retailers.
- hair and beauty salons.
- restaurants, bars and food and beverage outlets.
- offices and work place schemes for a wide variety of businesses.
- health, fitness and running labs.
- motor car showrooms

If you have a project and are considering your choice of contractor we would welcome the opportunity to meet and talk about our approach, and how we can deliver better value for money and overall project outcomes.



About Us
Retail



Within the world of retail we have worked with some amazing clients on a diverse range of projects. Our first ever project was a £2M contract with ZARA to build a store in Manchester, and fashion remains a core strength of our business. We have worked with cutting edge designers such as ROKSANDA ILINCIC and ELLIE SAAB, with luxury brands such as BOTTEGA VENETA and HERMES, and fashion global players such as MANGO, ZARA and GUESS.

We also work with most speciality sectors such as shoe shops, art galleries, motor retailers, health and beauty salons and just about every retail services business that you could think of.

So if you want to impress your customers, and need an environment that displays your business well, we can craft a suitable impression.



Oracle Interiors have developed relationships with numerous successful retail and leisure businesses, working on multiple sites across a number of years. We prefer to invest in good client relationships, as a strategy.

By contributing to the value creation process through buildability and cost engineering, and adding valuable learns to the development cycle we are able to evidence strong relationships.

Working with schedules of rates, competing for tendered opportunities and enjoying negotiated work means we have a balanced and healthy range of workflow

Should you need references from our clients to confirm our track record, then just ask.

About Us

Restaurant and F+B Fit-Out



We have constructed numerous food and bev environments for major national chains and smaller entrepreneurial retailers alike. Whether your interior concept is slick, polished with clean lines, or vintage needing that distressed look we can help you to achieve this.

We have undertaken a diverse and interesting range of construction and fit out projects. We have considerable experience in the fit-out of hospitality and food+beverage environments;

- restaurants and coffee shops.
- convenience and delicatessen food retailing.
- clubs and bars.
- servery counters for gelato, fro-yo or cookies etc

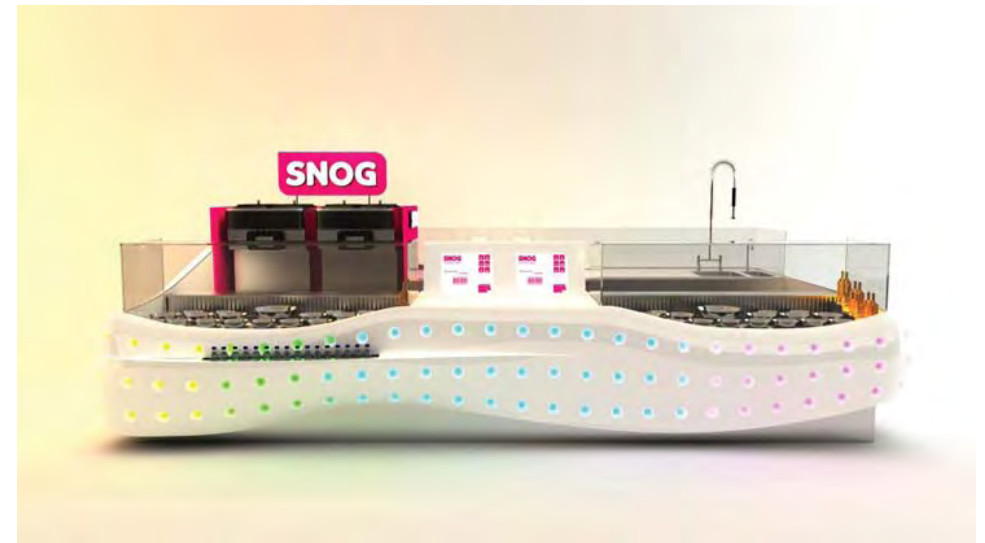
If you have a project and are considering your choice of contractor we would welcome the opportunity to meet and talk about our approach, and how we can deliver better value for money and overall project outcomes.



Creating bespoke environments for our clients we regularly manufacture fixtures from wood, metal, plastic and glass. Working from your concept designs we will produce working drawings and co-ordinate the detailing and fabrication of specialists such as refrigeration and electrical works, to ensure functionality.

Our joinery finishes are renowned for their quality, and we can create the finest laquered surfaces.

Where volume joinery is required we can also supply this competitively, or we can manage your choice of directly appointed supply to ensure a co-ordinated approach.



We have constructed a diverse range of food+bev servery and merchandising solutions for our clients. This has included fully operational stores or cafés complete with shopfront, but also stand alone counters with plumbing and re Fridgeration in locations such as Westfield London and other shopping malls.

This has included frozen yoghurt businesses, juice bars, coffee shops etc.

Works are programmed to co-ordinate the design development and sign-off procedure, off-site manufacture, approvals and landlord liaisons, and finally completion of site works often over just a few evenings.

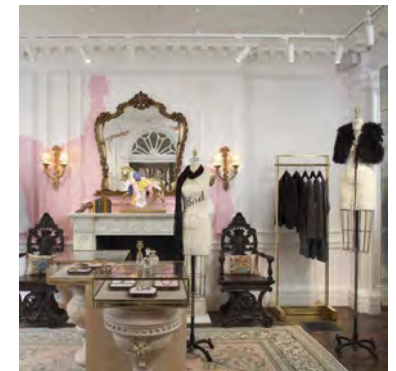
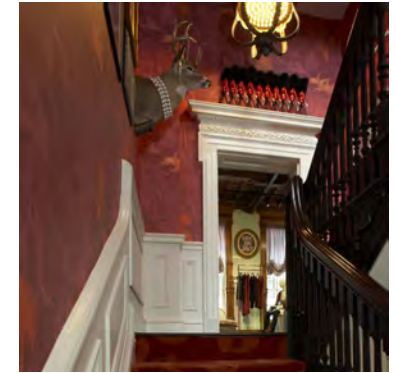


Client
Juicy Couture

Project Type
Retail Store

Location(s)
Bruton St,
Mayfair.

Project Deliverables
Fit-out
Principal Contractor
Restoration of Listed Building.



The UK flagship for Juicy Couture in Bruton Street, Mayfair completed by Oracle Interiors in a sixteen week programme. The building and roof was completed renovated and new mechanical and electrical services installed. Total project value approx £3.5M

www.oracleinteriors.co.uk

About Us

International Projects



Across Europe we work with our clients to co-ordinate and Project Manage your shop-fit from start to finish. We work in partnership with your store development team, sourcing the highest quality building and display materials from the most efficient location.

We will obtain all of the permits required before we start work, saving you valuable time. Regulations differ from country to country, and our great strength is that our teams have the knowledge on the ground to ensure all requirements are met – on fire, health and hygiene, and services.

We also have wide experience of working within high security environments, and with listed buildings.

We are given the architect's drawings and map out a detailed plan for complete construction works. The plan covers all aspects of the work – and these are shared with the customer.

We are a principal contractor delivering ventilation, air-conditioning, heating, lighting, partitions, flooring, electrical installations and anything else that is required. When the work is finished we will obtain all final approvals from the authorities, to enable you to move on to the merchandising.

Throughout Europe, we have a reputation for delivering on time and exceeding customer expectations.

Recent projects have included new stores for Warehouse at the Emporia Mall in Malmo, Oasis in Stockholm and Malmo, All Saints in Copenhagen, and L'Occitane en Provence in Cork, Dublin and Limerick.

Client
Shopping Centre Developers.

Project Type
Unit Splitting /
Shell Preparation

Location(s)
Intu, Westfield,
Queensbury
Properties etc

Project Deliverables
Partitioning
Shopfronts
Project Management



Specialist Landlord Works

Working within Shopping Centres across the UK, Oracle Interiors have established a reputation for quality of workmanship and strong health and safety practice.

We are regularly involved with unit preparation and spitting works on behalf of a number of leading shopping centre developers.

We also work with asset managers on refurbishment schemes, signage and rebranding packages and rest room and public area enhancements.

Works typically include;

- hoardings
- strip out works
- ceilings and partitioning
- screeding and floor finishes
- fireproofing
- shopfronts and glazing

Often our proactive approach enables very rapid lease conclusions serving the purposes on both landlord and inbound tenant.

Clients include Westfield Shopping Centres, Intu Shopping Centres, Hammerson, Queensbury Real Estate.

Environmental Policy



Oracle Interiors Limited recognise that our operations have an effect on the local, regional and global environment. As a consequence of this the management is committed to continuous improvements in environmental performance and the prevention of pollution.

Environmental regulations, laws and codes of practice will be regarded as setting the minimum standards of environmental performance.

We will implement our policies through a coordinated environmental management system to reduce pollution, emissions and waste. The company will use environmentally safe and sustainable (managed) forests and minimise the use of solvent based substances.

We will work with our suppliers and sub-contractors to ensure that they recognise and reduce the environmental impact of their products, activities and transport.

We will work in conjunction with customers towards reducing raw material usage.

We will work to minimise environmental pollution throughout the company by waste reduction, reuse or recycling, sending waste to landfill as a last resort, and ensuring safe disposal when no viable alternative is available.

We will seek to raise awareness and encourage participation of employees in environmental matters through education and training. We will also seek to highlight the environmental effects of their own activities both at home and work.

We also liaise with our neighbours both at head office and on site in order to minimise noise and potential disruptions.

Client
Oliver Peoples / Luxottica

Project Type
Retail Store

Location(s)
Sloane St,
London.

Project Deliverables
Fit-out
Principal Contractor
Specialist Joinery and Fixtures
Management of Mechanical and Electrical Services



Oliver Peoples is an American luxury eyewear brand, established in 1987. The company opened its first boutique in West Hollywood, California.

Working with the Luxottica design team and The Standard on project management, we completed the UK flagship on Sloane Street, London.

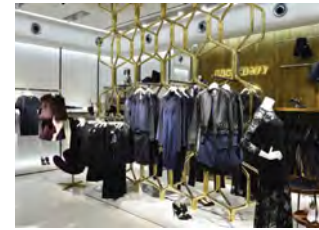
www.oracleinteriors.co.uk

Client
Miss Sixty

Project Type
Retail Store

Location(s)
Westfield,
London.

Project Deliverables
Fit-out
Principal Contractor
Installation of Joinery and Fixtures
Management of Mechanical and Electrical Services



Working with High Street Projects and the client's design team we have constructed a beautiful flagship store at Westfield London. On this project we have been responsible for all internal finishes; stone flooring, sculpted hi-gloss wall cladding, shopfronts, and installation of rose gold rimex fixtures and fittings, specialist joinery and signage.

www.oracleinteriors.co.uk

Client
Black Sheep Coffee

Project Type
Coffee Shop
and Bar

Location(s)
Regent's Place,
London

Project Deliverables
Fit-out
Fixtures and Installation
Principal Contractor



Construction of a coffee shop and cocktail bar for Black Sheep Coffee in Regent's Place in conjunction with MAC Project Management and Fruitful Design. The store features bespoke fixtures clad in reclaimed timber with zink worktops and aged /distressed wall finishes. Graffiti by specialist decorators also features widely within the store.

Operational challenges were a major consideration in the completion of this 5 week project, within a large serviced office environment in central London.

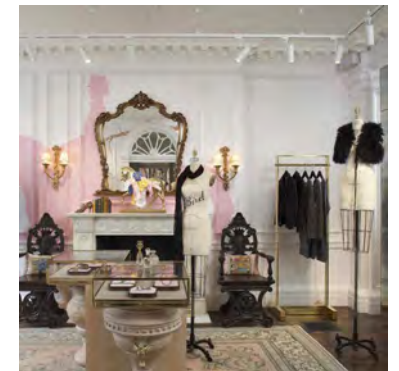
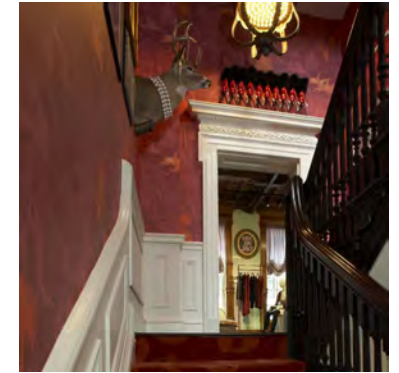
www.oracleinteriors.co.uk

Client
Juicy Couture

Project Type
Retail Store

Location(s)
Bruton St,
Mayfair.

Project Deliverables
Fit-out
Principal Contractor
Restoration of Listed Building.



The UK flagship for Juicy Couture in Bruton Street, Mayfair completed by Oracle Interiors in a sixteen week programme. The building and roof was completed renovated and new mechanical and electrical services installed. Total project value approx £3.5M

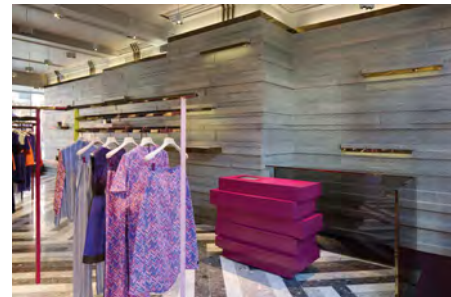
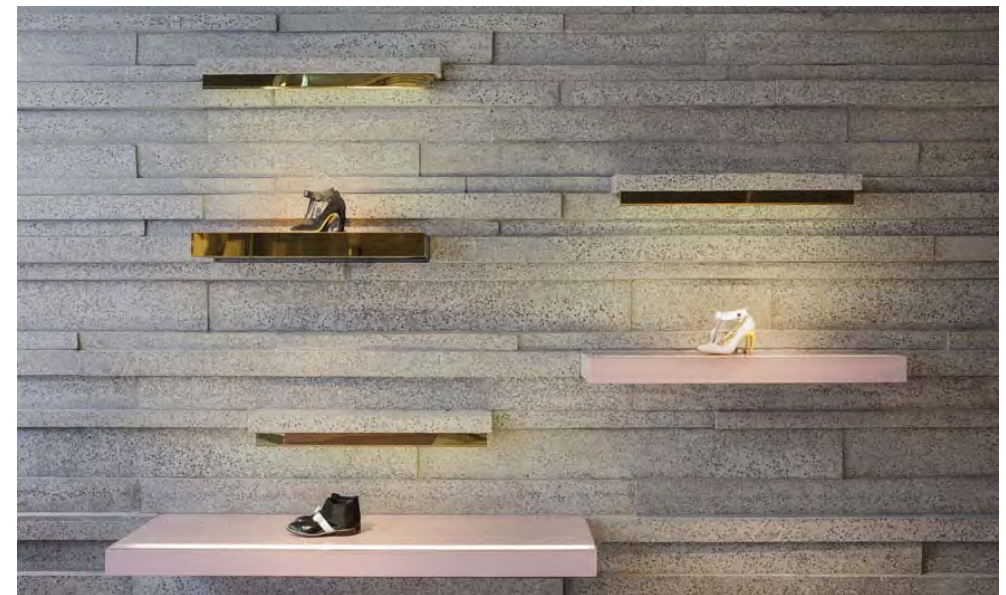
www.oracleinteriors.co.uk

Client
Roksanda

Project Type
Retail Store

Location(s)
Mount Street,
London.

Project Deliverables
Fit-out
Principal Contractor
Specialist Joinery and Fixtures
Management of Mechanical and Electrical Services



Working with Adjaye Associates and the Roksanda team we have constructed a beautiful flagship store on Mount Street, the heart of fashionable Mayfair. On this project we have been responsible for all internal finishes; herringbone stone flooring, sculpted concrete wall cladding, shopfronts, rose gold rimex fixtures and fittings, specialist joinery and signage.

www.oracleinteriors.co.uk

Client
POD Food

Project Type
Coffee Shop
and Takeaway

Location(s)
Hammersmith,
London

Project Deliverables
Fit-out
Fixtures and Installation
Principal Contractor



Construction of a healthy food to go store in Hammersmith in conjunction with IDL and NOW London. The store features bespoke fixtures constructed from light oak timber, with integrated servery equipment and refrigeration and food storage.

Part of the store is equipped as a dining area, although primarily a take away store. Oracle Interiors were responsible for the manufacture of all joinery and internal finishes in the completion of this 5 week project.

www.oracleinteriors.co.uk

Client
Footlocker

Project Type
Retail Store

Location(s)
Brixton,
London

Project Deliverables
Fit-out
Fixtures Installation
Principal Contractor



Construction of a retail store for Footlocker in Brixton with RPA Vision. A key destination for sportswear, the Brixton store offers extensive collections of footwear and apparel, including the House of Hoops, a dedicated basketball shoe store, in all over 4000 sq ft retail.

Scope of project included complete interior fit-out with mechanical and electrical services, floor and ceiling finishes, new signage and all fixtures and fittings.

www.oracleinteriors.co.uk

Client

On Motcomb,
Al Othman / Auxerre Fashions Ltd.

Project Type

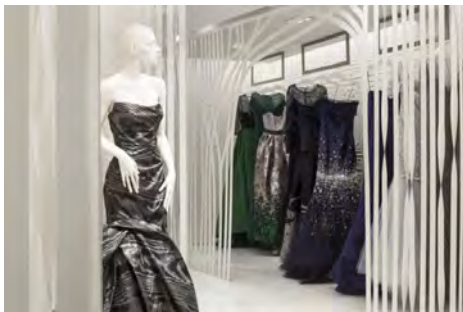
Retail Store

Location(s)

Motcomb St,
London

Project Deliverables

Fit-out
Specialist Fixtures and Fittings
Principal Contractor



Construction of an exquisite fashion boutique in the heart of Belgravia in conjunction with Ammar Bashir and Flower Michelin Architects . The store is intricately detailed, with a beautifully understated minimalist white interior. Oracle Interiors constructed a laticed metalwork screen through which the gowns and evening wear can be viewed. Moulded silk wall coverings, a glass floor, and other bespoke fixtures and fittings create an extraordinary atmosphere within this boutique.

www.oracleinteriors.co.uk

Client
Oasis

Project Type
Retail Store

Location(s)
Argyll Street,
London

Project Deliverables
Fit-out
Fixtures and Installation
Principal Contractor



Strip out of existing store, and reconfiguration of trading space to position escalators to store margins. Extensive structural alterations and complete interior fit-out of a new flagship store for Oasis by Dalziel and Pow Design Consultants, within a ten week programme.

Subsequent roll out at Westfield Stratford and other regional estate and international locations including Malmo Sweden.

www.oracleinteriors.co.uk

Client
Mango

Project Type
Retail Store

Location(s)
Regent Street,
London.

Project Deliverables
Fit-out
Principal Contractor
Management of Mechanical and Electrical Services



Following a strip out of the existing Mango UK flagship store we were tasked with replacement of all mechanical, electrical and life safety systems and restoration of this listed building on Regent Street. Completed on a ten week programme we completely refitted this to the new international store design.

www.oracleinteriors.co.uk



Following a strip out of the existing Zara and Massimo Dutti stores to a developers shell we completely refitted this to the new international store design. Oracle Interiors have worked for Inditex Group since 2002, having undertaken over 40 store fit-out projects with values up to £2M (c£3.5M incl directs)

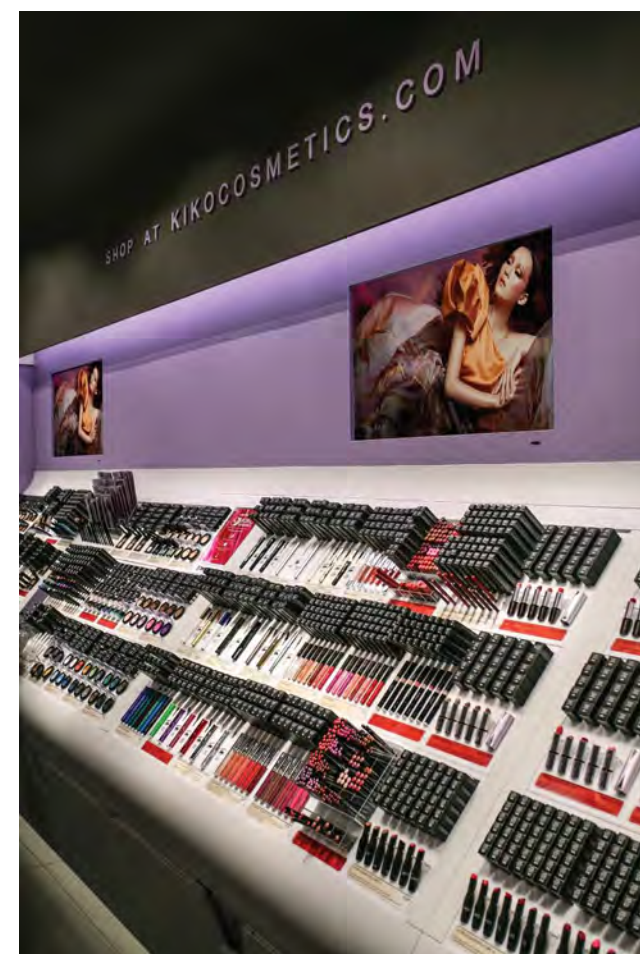
www.oracleinteriors.co.uk

Client
KIKO Cosmetics

Project Type
Retail Store

Location(s)
Cribbs Causeway
Bristol

Project Deliverables
Fit-out
Fixtures supervision.
Principal Contractor



Complete interior fit-out of a new retail store for Italian cosmetics manufacturer KIKO, with GAD Design acting as Designer and Project Manager.

KIKO are a specialist make-up manufacturer establishing an international estate for their exclusive products. The popularity of the brand has led to rapid growth and Oracle Interiors have completed a number of stores. Complete interior fit-out within a four week programme.

www.oracleinteriors.co.uk

Client
Handmade Burger Co

Project Type
Restaurant

Location(s)
Birmingham
Grand Central

Project Deliverables
Fit-out
Fixtures and Fittings
Principal Contractor



Complete interior fit-out of a new restaurant for Handmade Burger at the Grand Central development, with Brown Studio acting as Design Consultants and Fusion BC as Project Managers.

The client's preference for site specific architecture led to a suggestion of yesteryear train travel and railway stations of our youth, carried through in terms of wall and partition treatments, central clock feature and seating bankettes. Complete interior fit-out within a eight week programme, despite site working conditions.

www.oracleinteriors.co.uk

Client
Cadenzza

Project Type
Retail Store

Location(s)
Covent Garden,
London

Project Deliverables
Fit-out
Fixtures Installation
Principal Contractor



A new flagship for Cadenzza, the new fashion jewellery brand from Swarovski in Covent Garden. Completed during a four week programme including strip out the store stocks an incredible range of jewellery by Jean Paul Gaultier, Versace and Oscar de la Renta.

The Cadenzza store's unique design mirrors the layouts of fashion magazines, letting you shop the latest trends for unique jewellery for the everyday and special occasions.

www.oracleinteriors.co.uk

Client

Timberland /
Seventy Three Retail Ltd

Project Type

Retail Store

Location(s)

The Lexicon,
Bracknell.

Project Deliverables

Fit-out
Fixtures Installation
Principal Contractor



Construction and interior fit-out of a new Timberland stores for Seventy Three Retail with design by Wildwood, within a five week programme. Shopfitting equipment supplied by VF Corporation and installed as part of contract works, although we manufacture certain bespoke fixture or cashdesk elements for each store.

Oracle Interiors have also completed approximately twenty stores in Guildford, Padstow, Milton Keynes, Southampton, Windsor, Bournemouth, Bath and Tunbridge Wells for this client who operate franchised brand offer stores for Timberland, Havanas, Vans and The North Face.

www.oracleinteriors.co.uk

Client
Ecco Shoes

Project Type
Retail Store

Location(s)
Oxford Street,
London

Project Deliverables
Fit-out
Fixtures and Installation
Principal Contractor



Construction and interior fit-out of a new flagship store for ECCO Shoes with design by M2 Retail, within a five week programme. Shopfitting equipment co-ordination and installation in conjunction with client's nominated supplier

Oracle Interiors have completed approx twenty stores over the last three years at locations such as Westfield and Intu Shopping Centres.

www.oracleinteriors.co.uk

Client
Poetry Fashion

Project Type
Retail Store

Location(s)
Sloane Square,
London.

Project Deliverables
Fit-out
Principal Contractor,
Specialist Joinery,
Management of Mechanical and Electrical Services



Creation of the UK flagship store for Poetry Fashion - a highly successful online retailer with an up-scale customer base. Refurbishment of the building fabric and complete interior fit-out including manufacture of shop fixtures.

www.oracleinteriors.co.uk

Client
Wagamama Restaurants

Project Type
New Build Restaurant
Fit-out and refit projects

Location(s)
Brighton,
and UK locations.

Project Deliverables
Fit-out
Joinery, Seating and Fixtures
Principal Contractor



Structural alterations to a developers shell to form new restaurant and kitchens for Wagamama. Manufacture of all specialist joinery including waiter stations, dispense bars, dining tables and benches shopfront and all fixtures and fittings. Projects secured under competitive tender, this is one of a number of new-build and refit projects completed as Main Contractors.

www.oracleinteriors.co.uk

Client
Asics

Project Type
Retail Store

Location(s)
Oxford Street,
London

Project Deliverables
Fit-out
Fixtures and Installation
Principal Contractor



Strip-out and refit of a UK flagship store for ASICS in conjunction with Brinkworth Design. The Oxford Street flagship project brings the new international concept to the UK, offering ASICS' collection of footwear and apparel, as well as advanced services and professional advice for runners.

Scope of project included structural alteration of the building trading across three floors, installation of new steel staircase, installation of complete new interior including millwork and display screens.

www.oracleinteriors.co.uk

Client
Liberty of London

Project Type
Department Store

Location(s)
Carnaby Street ,
London

Project Deliverables
Fit-out
Fixtures and Installation
Principal Contractor



Department Store refit with Angus Pond Associates on design, and Appleyard and Trew as Cost Managers we manufactured new store fixtures, cash desks and associated electrical works, also feature flooring finishes to the main hall at this iconic London fashion and luxury emporium.

Working within this listed building we completed the manufacture and installation works within a three week site programme.

www.oracleinteriors.co.uk

Client
Hammerson /
West Quay Shopping Centre

Project Type
Shopping Centre
CS Desk

Location(s)
West Quay,
Southampton.

Project Deliverables
Fit-out
Fixtures and Installation
Principal Contractor



One of a number of improved customer service areas within Hammerson Shopping Centres. Our project involved the construction of new meet and greet area with bespoke fixtures and light fittings with integrated display screens.

Project co-ordination of all services with Workman, the clients Project Managers, and Object Space Place the lead designer required careful phasing over six months for design detailing, off site manufacture and ultimately a ten day site programme.

www.oracleinteriors.co.uk

Client
Joules Clothing

Project Type
New Store

Location(s)
St Catherine's
Walk,
Carmarthen.

Project Deliverables
Fit-out
Fixtures and Installation
Principal Contractor



Construction of a new store for Joules Clothing, in conjunction with the client's design and project management team, RPF Associates. After stripping out the former tenant's shopfit, we undertook a complete interior refit to include new partition walls to the fittings rooms, and an attractive cashdesk area with decorative beams and barn doors detail to conceal clutter, brick slips and rustic cornices. The shopfront was resprayed economically to colour, the vinyl flooring, and the whole store looks very visually effective.

A good example of a high quality store environment with mid-market appeal at effective cost.

www.oracleinteriors.co.uk

Client
All Saints

Project Type
Retail Store

Location(s)
Kings Road
London

Project Deliverables
Fit-out
Fixtures
Project Management



One of a number of retail construction projects for All Saints produced in conjunction with Brinkworth Design Consultants. Development of specialist finishes to create a unique store environment.

Beginning with the Brighton store this led to a five year relationship with the client leading to the sale of the business by the directors.

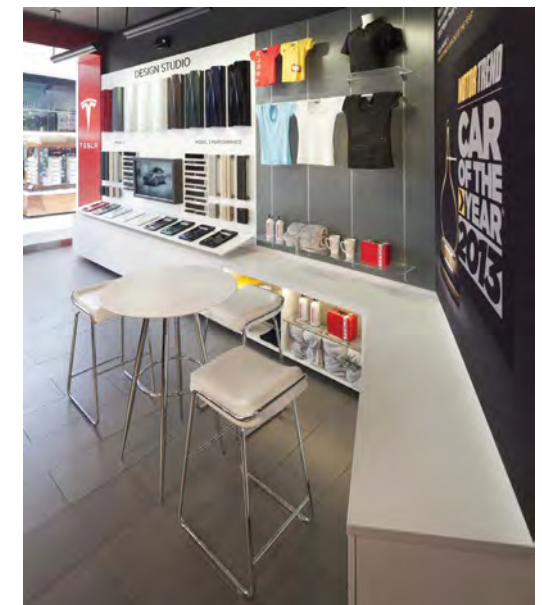
www.oracleinteriors.co.uk

Client
Tesla UK Flagship Showroom

Project Type
Retail Store

Location(s)
Westfield
London

Project Deliverables
Fit-out
Fixture Installation
Project Management



For their UK flagship store, the electric supercar manufacturer Tesla chose to work with Oracle Interiors. The Westfield London store environment is well suited to luxury brands, and Oracle Interiors were recommended by the Property team at Westfield for their quality of finishes and project management skills. The project was completed within a five week programme.

www.oracleinteriors.co.uk

Client
Cafe Brera

Project Type
Restaurant Fit-out

Location(s)
Hammersmith

Project Deliverables
Fit-out
Joinery, Seating and Fixtures
Principal Contractor



Internal fit-out as part of a redevelopment of theatre, to form new restaurant and servery for Cafe Brera. Manufacture of all specialist joinery including waiter stations, dispense bars, dining tables and benches shopfront and all fixtures and fittings.

www.oracleinteriors.co.uk

Client

Rossano Ferretti, Mayfair.

Project Type

Hair Spa & Salon.

Location(s)

George Street,
London.

Project Deliverables

Fit-out
Principal Contractor
Specialist Joinery and Fixtures
Management of Mechanical and Electrical Services



Located at 17 St George Street, Mayfair, the new spa is exclusive from the onset. Housed within a former Fabergé building and home of William Morris, the spa welcomes with a suit-clad-porter to escort clients up the pristine black carpet, arriving into super-chic spa. Quiet, glossy and void of frenzied activity, with William Morris wallpaper adorning the walls, the calm environment is the first antidote (of many) to hectic London life. Spanning four floors, the spa is full of light and space, with only fourteen stations located across all three. Clients can experience both styling and colour on the first and second, whilst the third is strictly private; reserved for those who wish to be preened away from prying eyes

www.oracleinteriors.co.uk

Client
Rude Health Cafe

Project Type
Coffee Shop

Location(s)
New Kings Road
London

Project Deliverables
Fit-out
Fixtures and Installation
Principal Contractor



Construction of a healthy cafe for Rude Health in Fulham in conjunction with IDL and Now London as PM and Designer. The store features a modern and minimalistic aesthetic to represent the brand values with light oak finishes featuring in the furniture, fixtures and flooring with beautiful stone servery counters.

Completed within a 3 week site program in May 2016.

www.oracleinteriors.co.uk